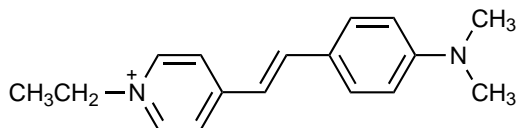


### **cyanine dyes**

Synthetic dyes with the general formula  $R_2N[CH=CH]_nCH=N^+R_2$   
 $\leftrightarrow R_2N^+=CH[CH=CH]_nNR_2$  ( $n$  is a small number) in which the nitrogen and part of the conjugated chain usually form part of a heterocyclic system, such as imidazole, pyridine, pyrrole, quinoline and thiazole, e.g.



1995, 67, 1329