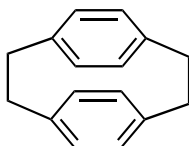


## cyclophanes

The term originally applied to compounds having two *p*-phenylene groups held face to face by  $-[\text{CH}_2]_n-$  bridges. It now designates compounds having (i) *mancude-ring systems*, or assemblies of mancude-ring systems, and (ii) atoms and/or saturated or unsaturated chains as alternate components of a large ring. E.g. [2.2](1,4)(1,4)cyclophane [or 1(1,4),4(1,4)-dibenzenacyclohexaphane].



Many chemists include in this class any bridged aromatic system, irrespective of the attachment positions of the bridge.

1995, 67, 1330