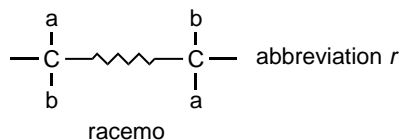
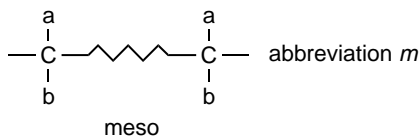


### meso structures (in polymers)

Relative configurations of consecutive, but not necessarily contiguous, constitutionally equivalent carbon atoms that have a symmetrically-constituted connecting group (if any) are designated 'meso' or 'racemo', as appropriate.

Examples:



(The symbol  $\text{---}\text{~~~~~}\text{---}$  represents a symmetrically-constituted connecting group, such as  $\text{---CH}_2\text{---}$ ,  $\text{---CH}_2\text{---CH}_2\text{---}$ , or  $\text{---CR}_2\text{---CH}_2\text{---CR}_2\text{---}$ .)

P.B. 37