

Mechanism-based isolation and structures of some anticancer active natural products

A.A. Leslie Gunatilaka,^a David G.I. Kingston,^a and Randall K. Johnson^b

^aDepartment of Chemistry, Virginia Polytechnic Institute and State University, Blacksburg, Virginia 24061-0212, and ^bSmithKline Beecham Pharmaceuticals, P.O. Box 1539, King of Prussia, PA 19406-0939, U.S.A.

Abstract: Application of a mechanism-based anticancer bioassay employing DNA repair- or recombination-deficient mutants of the yeast *Saccharomyces cerevisiae* for screening and subsequent bioassay-guided fractionation of bioactive higher plant and bryophyte extracts led to the isolation of a variety of natural products with potential anticancer activity. Presented herein are interesting structural features of some representative examples of natural products active in our mechanism-based bioassay and cytotoxicity assays along with structure-activity relationships of synthetic analogs of some of them.

The last decade has witnessed the evolution of anticancer natural product drug discovery research from an empirical search for general cytotoxic agents to a more mechanism-based approach. One such approach recently developed utilizes DNA repair- or recombination-deficient mutants of the yeast *Saccharomyces cerevisiae* (1). An important feature of many tumor cells is that they have defects in their ability to repair damage to DNA as compared with normal cells, suggesting that agents with selective toxicity towards repair-deficient cells might be potential anticancer agents. Strongly supporting this rationale is the fact that repair-deficient yeast mutants have been demonstrated to be hypersensitive to most DNA-damaging agents (2). The mechanism-based screen that we employ in our search for potential anticancer agents is based on the differential response of DNA repair-deficient and repair-proficient yeast strains to the test sample. Three major DNA repair pathways have been defined in yeast; they are known as the *rad3*, *rad6* and *rad52* pathways. The *rad3* pathway is associated with excision repair, the *rad6* pathway is the error-prone pathway, and *rad52* is the recombinational pathway associated with repair of double-strand breaks and meiotic recombination (3). Yeasts deficient in each of these repair pathways and also having increased cell membrane permeability have been used to screen for potential anticancer agents (1,4). Figure 1 depicts the principles underlying the production of these yeast mutants.

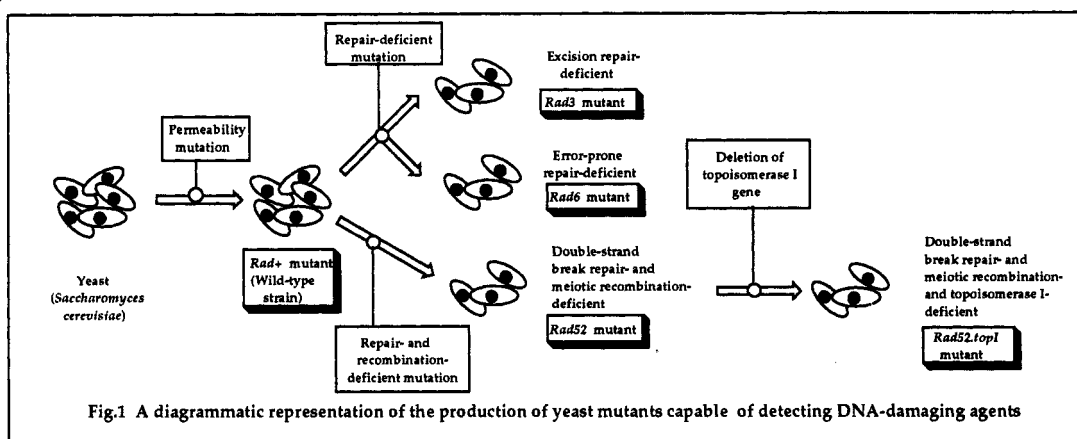
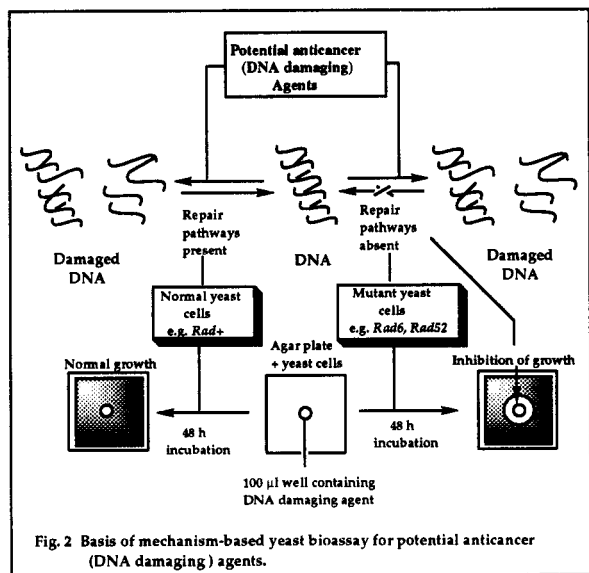


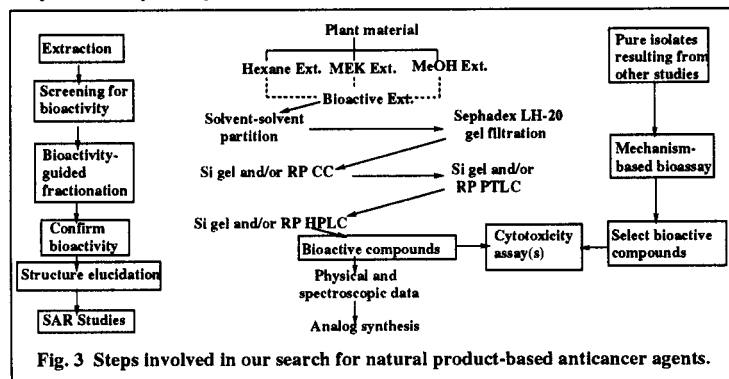
Fig.1 A diagrammatic representation of the production of yeast mutants capable of detecting DNA-damaging agents

The basis of this bioassay is diagrammatically presented in Fig. 2. The assay is carried out by measuring the growth inhibition of repair-deficient yeasts, usually *rad52* and *rad6*, in comparison with the wild-type yeast, *rad+*, having the same permeability mutation (Fig. 1). A mutant lacking one of the repair pathways will be more sensitive than the wild-type yeast to DNA damage repaired predominantly

by that pathway, and thus agents which cause DNA damage can be selectively detected. The results are usually reported as IC_{12} values, which represent the concentration (in $\mu\text{g/ml}$) required to produce an inhibition zone of 12 mm diameter around a 100 μl well in the yeast strain in question. An extract is considered active if it shows selective activity against one or more repair-deficient yeasts (IC_{12} less than one-third that of the wild-type yeast) and has an IC_{12} less than 2000. A mutant *rad 52* repair-deficient strain, *rad52.top1*, with the additional deletion of the DNA topoisomerase I gene is also available and can detect agents that produce DNA damage specifically by interacting with DNA topoisomerase (5). Thus an agent which exhibits greater activity towards the *rad52.top1* strain than to the *rad52* strain, with a differential of at least 3, most probably mediates its activity through inhibition of DNA topoisomerase II. Conversely, greater toxicity towards *rad52* implies the presence of a DNA topoisomerase I inhibitor.

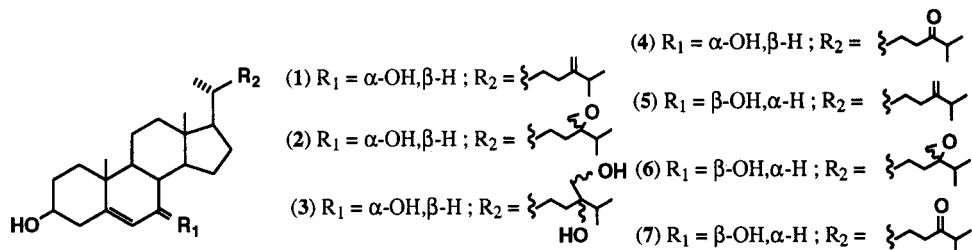


over 5000 extracts derived from bryophytes and higher plants collected in the U.S., Brazil, Ethiopia, Kenya, Philippines, and Sri Lanka. The steps involved in our search for natural product-based anticancer agents are summarized in Fig. 3. Bioactive compounds and their analogs have been subjected to cytotoxicity assays with a view to selecting candidates for further development as anticancer agents.



The DNA damaging agents encountered in this study had diverse structures ranging from sterols, sesquiterpenoids, limonoids, pterocarpan, naphthoquinones, oxoaporphines, piperidines, and coumarins. Included in the following discussion are representative examples of some of these classes of compounds along with the bioactivities exhibited by them in our mechanism-based bioassay and cytotoxicity assays.

Sterols of *Pseudobersama mossambicensis* (Meliaceae) - Bioactivity-guided fractionation of the methyl ethyl ketone (MEK) extract of this previously uninvestigated Kenyan plant afforded 3 bioactive ergost-5-ene-3 β ,7 α -diol derivatives **1** - **3** (4). The interesting biological activity exhibited by these sterols



prompted us to synthesize several structural analogs **4** - **7** starting from readily available stigmasterol, and the bioactivity profile of these natural and synthetic sterols is presented in Table 1. Based on these data it can be hypothesized that there is no direct correlation between the activity shown by these sterols

in mechanism-based and cytotoxicity bioassays. The synthetic 7 β -hydroxy analogs **5** - **7**, although found to be cytotoxic, showed no DNA damaging activity suggesting that they act by different mechanisms.

TABLE 1. Bioactivity of natural sterols and their semisynthetic analogs.

Sterol	Bioactivity		Sterol	Bioactivity	
	Mechanism-based <i>rad52</i> IC ₁₂ (μ g/ml)	Cytotoxicity Vero cell IC ₅₀ (μ M)		Mechanism-based <i>rad52</i> IC ₁₂ (μ g/ml)	Cytotoxicity Vero cell IC ₅₀ (μ M)
1	8.0	58	5	> 8000	31
2	0.4	> 100	6	> 8000	16
3	1.0	not tested	7	> 500	21
4	14.0	10			

Naphthoquinones of *Crescentia cujete* (Bignoniaceae) - A search for compounds responsible for the bioactivity of an MEK extract of this plant resulted in the isolation of seven naphthoquinones (**8** - **14**) (**5**) and two novel furofuranonaphthoquinones (**15** and **16**) (**6**), all of which were bioactive. Structural and stereochemical analysis were carried out with the aid of 2D NMR techniques (including HMBC and selective INEPT), CD measurements, and NMR analysis of Mosher esters. For bioactivity data, see Table 2. The planar nature of these naphthoquinones suggests that intercalation into DNA may be involved in their mechanism of DNA damage.

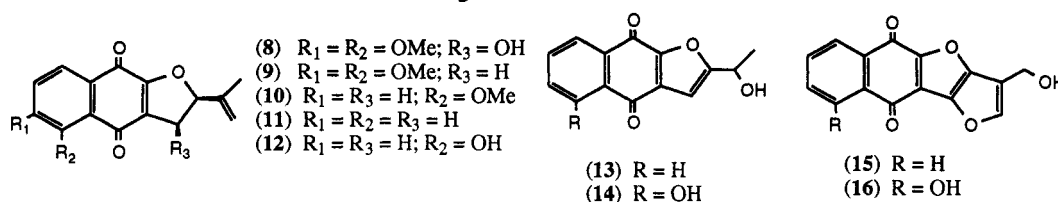
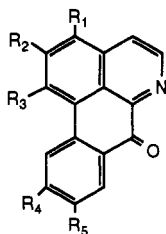


TABLE 2. Bioactivity of naphthoquinines from *C. cujete*.

Compound	Bioactivity		Compound	Bioactivity	
	Mechanism-based <i>rad52</i> IC ₁₂ (μ g/ml)	Cytotoxicity Vero cell IC ₅₀ (μ M)		Mechanism-based <i>rad52</i> IC ₁₂ (μ g/ml)	Cytotoxicity Vero cell IC ₅₀ (μ M)
8	47	3.7	13	14	0.4
9	33	4.7	14	5	0.2
10	48	4.3	15	10	2.3
11	60	not tested	16	2	2.9
12	80	not tested			

Oxoaporphine alkaloids of *Xylopia aethiopica* and *Miliusa cf. banacea* (Annonaceae) - A literature search revealed the presence of diterpenes in *X. aethiopica* and no reported work on the genus



- (**17**) R₁ = R₂ = R₃ = OMe; R₄, R₅ = OCH₂O
 (**18**) R₁ = R₄ = R₅ = H; R₂, R₃ = OCH₂O
 (**19**) R₁ = R₅ = H; R₂, R₃ = OCH₂O; R₄ = OMe
 (**20**) R₁ = R₅ = H; R₂, R₃ = OCH₂O; R₄ = OH

Miliusa. Fractionation of the bioactive methanolic extract of *X. aethiopica* afforded the known oxoaporphine alkaloids, oxophoebine (**17**) and lirioidenine (**18**), showing selective activity against *rad6* and *rad52* yeast mutants, and several inactive oxoaporphines. Oxophoebine was also toxic to the *rad52.top1* mutant. Bioassay guided fractionation of the MEK extract of *M. cf. banacea* yielded lauterine (**19**) and a new oxoaporphine, 10-hydroxylirioidenine (**20**), both with selective activity towards the *rad52* and *rad52.top1* yeast mutants. These alkaloids represent a novel class of DNA topoisomerase inhibitors and accumulated data suggest the requirement of a methylenedioxy group for DNA damaging activity of oxoaporphines (see Table 2a).

TABLE 2a. Bioactivity of aporphine alkaloids

Alkaloid	Bioactivity (mechanism-based) IC ₁₂ (μ g/ml)			Alkaloid	Bioactivity (mechanism-based) IC ₁₂ (μ g/ml)		
	<i>rad 52</i>	<i>rad52.top1</i>	<i>rad6</i>		<i>rad 52</i>	<i>rad52.top1</i>	<i>rad6</i>
17	6.4	2.6	4.7	19	214	113	not tested
18	16.7	not tested	not tested	20	295	72	not tested

Piperidine alkaloids of *Cassia leptophylla* (Leguminosae) - A methanolic extract of the fresh leaves of this previously uninvestigated Brazilian species afforded 3 bioactive piperidine alkaloids, spectraline (**21**), spectralinin (**22**) and canavalin (**23**). The bioactivity data are presented in Table 3.

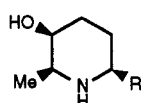
(21) R = $-(\text{CH}_2)_{12}\text{COMe}$ (22) R = $-(\text{CH}_2)_{12}\text{CH}(\text{OH})\text{Me}$ (23) R = $-(\text{CH}_2)_{10}\text{CH}(\text{OH})\text{Me}$

TABLE 3. Bioactivity of piperidine alkaloids.

Alkaloid	Bioactivity	
	Mechanism-based <i>rad52</i> IC ₁₂ (μg/ml)	Cytotoxicity Vero cell (μM)
21	15	not tested
22	16	10.0
23	16	10.0

Pterocarpan of *Erythrina burana* (Fabaceae) - From the chloroform extract of the bark of *E. burana* two moderately bioactive pterocarpan, phaseollidin (**24**) and cristacarpin (**25**) were isolated (7). Their bioactivity data are given in Table 4.

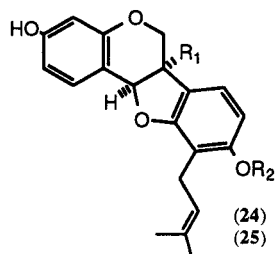
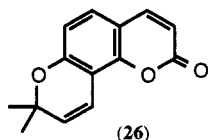
(24) R₁ = R₂ = H(25) R₁ = OH; R₂ = Me

TABLE 4. Bioactivity of pterocarpan

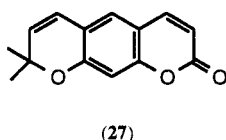
Pterocarpan	Bioactivity ^a				
	Mechanism-based IC ₁₂ (μg/ml) <i>rad52</i>	<i>rad6</i>	Cytotoxicity IC ₅₀ (μM)		
			CHOC	CHOC-PGO	P-388
24	500	> 1000	4.0	7.6	> 10.0
25	80	540	> 20.0	4.0	> 10.0

^a CHOC, Wild-type Chinese hamster ovary cells; CHOC-PGO, P-glycoprotein overproducing Chinese hamster ovary cells; P-388, wild-type P-388 murine leukemia cells.

Coumarins from Sri Lankan Rutaceae - In an extension to our random screening program by including pure isolates (see Fig. 3), we have evaluated 12 coumarins isolated from three Sri Lankan Rutaceae and found two of them, seselin (**26**) and xanthyletin (**27**) to be active. Seselin also exhibited moderate cytotoxicity (Table 5).



(26)



(27)

TABLE 5. Bioactivity of coumarins

Coumarin	Bioactivity	
	Mechanism-based <i>rad 52</i> IC ₁₂ (μg/ml)	Cytotoxicity Vero cell IC ₅₀ (μM)
26	33	12
27	52	> 20

Acknowledgements This presentation would not have been possible without expert assistance from the following coworkers; Dr. A. Ahmad, Ms. N. Baj, Prof. V da S. Bolzani, Dr. G.W. Chan, Prof. E. Dagne, Mr. L. Faucette, Mr. T.E. Glass, Dr. G.G. Harrigan, Dr. C.E. Heltzel, Mr. G.A. Hofmann, Prof. J.L. Liang, Dr. Habib-ur-Rehman, Dr. G. Samaranyake and Prof. L.M.M. Valente; we gratefully acknowledge their valuable contributions to this program. The funding for this work was provided by a National Cooperative Drug Discovery Group grant (1 UO1 CA 50771) awarded to the University of Virginia (Dr. S.M. Hecht, Principal Investigator).

REFERENCES

1. R.K. Johnson, H.F. Bartus, G.A. Hofmann, J.O. Bartus, S.-M. Mong, L.F. Faucette, F.L. McCabe, A. Chan, and C.K. Mirabelli, in *"In Vitro and In Vivo Models for Detection of New Antitumor Drugs."* Ed. by L.J. Hanka, T. Kondo, and R.J. White, Organizing Committee of the 14th International Congress of Chemotherapy, Kyoto, p. 15-26 (1986).
2. W.-K. Eng, L. Faucette, R.K. Johnson, and R. Stenglanz, *Mol. Pharmacol.* **34**, 775 (1988).
3. J.C. Game in: *"Yeast Genetics; Fundamentals and Applied Aspects."* Ed. by J.F.T. Spencer, D.M. Spencer, and A.R.W. Smith, p. 109, Springer-Verlag, New York (1983).
4. A.A.L. Gunatilaka, G. Samaranyake, D.G.I. Kingston, G. Hofmann, and R.K. Johnson *J. Nat. Prod.* **55**, 1648 (1992).
5. C.E. Heltzel, A.A.L. Gunatilaka, T.E. Glass, D.G.I. Kingston, G. Hofmann, and R.K. Johnson, *J. Nat. Prod.* **56**, 1500 (1993).
6. C.E. Heltzel, A.A.L. Gunatilaka, T.E. Glass, and D.G.I. Kingston, *Tetrahedron* **49**, 6757 (1993).
7. E. Dagne, A.A.L. Gunatilaka, D.G.I. Kingston, M. Alemu, G. Hofmann, and R.K. Johnson, *J. Nat. Prod.* **56**, 1831 (1993).